

## Technical data

Circular concrete distributor			RVM 7-125	RVM 10-125	RVM 12-125	RVM 14-125	RVE 17-125	RVE 19-100
Basic version			RK	RK, AR	RK, AR	RK	RK	RK
Counter jib			no	if required	yes	yes	no	no
Electrical drive for distribution arms			no	for arm A, if required	no	no	yes	yes
Tubular column extension			possible	poss. for RK	poss. for RK	possible	possible	possible
Mobile version			no	possible	possible	possible	no	no
Pipeline dia.	mm		125	125	125	125	125	100
Reach L	m		6.6	10.3	12.3	14.1	17.1	19.1
Arm length A	m		3.55	5.55	6.55	7.55	9.05	10.05
Arm length B	m		3.05	4.75	5.75	6.55	8.05	9.05
Weight w/o ballast	t		—	1.2	1.3	3.1	4.0	3.9
Weight with ballast	t		—	2.17	2.3	5.1	—	—
Transport width min.	m		—	1.87	1.96	—	—	—
Transport length min.	m		—	5.45	8.15	—	—	—
Support pressure max.	daN		—	1000	1150	—	—	—
Discharge height	m		1.25	0.77	0.77	2.3	2.1	2.1
Wheelbase	m		—	2.2 × 2.2	—	—	—	—
Supporting widths max.	m		—	3.2 × 3.2	2.5 × 2.5	—	—	—
Electric motor	kW		—	0.55	0.55	—	1 × 0.55 1 × 0.75	1 × 0.55 1 × 0.75
Voltage *	V		—	220/380	220/380	—	220/380	220/380
End hose length	m		—	—	—	4.0	4.0	4.0
Tubular column height	m		2.2	2.8	—	7.0	7.15	7.15
Operating weight	daN		—	2350	2675	5700	4700	4400
Operating moment	daNm		—	1750	2000	8400	18300	18310

\* Special voltages possible on request.

Subject to modifications in the interest of technical progress.

# SCHWING

Friedrich Wilh. SCHWING GmbH  
Manufacturers of Construction Equipment  
P.O. Box 200362  
D-4690 Herne 2  
Federal Republic of Germany  
Phone (0) 2325 / 7871  
Telex 820348

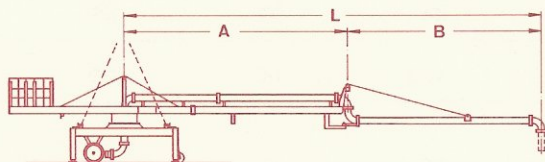


# SCHWING

## Circular Concrete Distributor

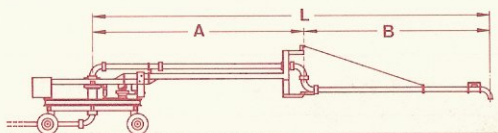
### Variant AR

Here: Model RVM 10-125 AR



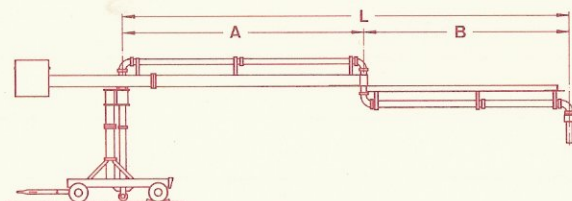
### Variant FG

Here: Model RVME 10-125 FG

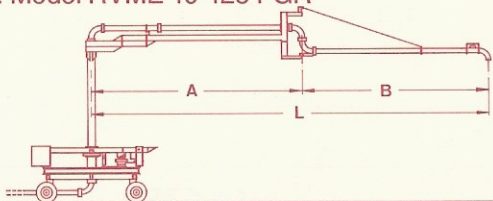


### Variant FGR

Here: Model RVMG 12-125 FGR

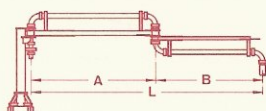


Here: Model RVME 10-125 FGR

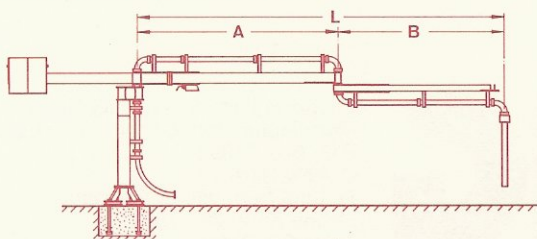


### Variant RK

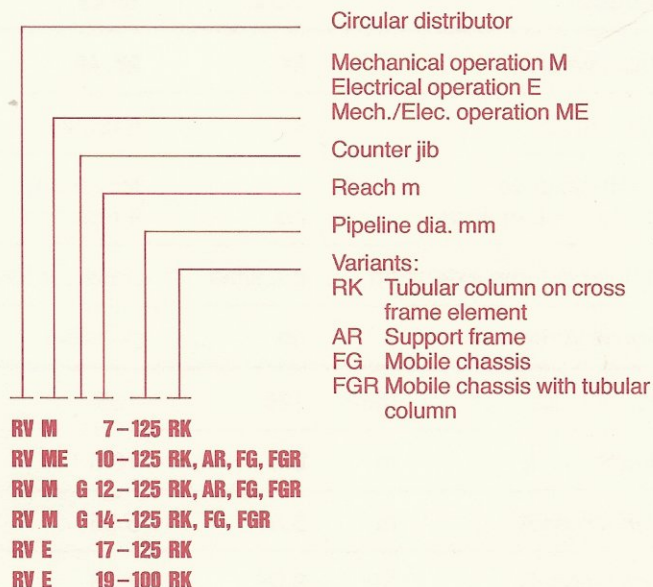
Here: Model RVM 7-125 RK



Here: Model RVMG 10-125 RK



### Model classification



### Description

SCHWING Circular concrete distributors are operated as follows:

- Variant AR** — on support frame
- Variant FG** — on mobile chassis
- Variant FGR** — on mobile chassis combined with tubular column
- Variant RK** — on tubular column with cross frame element. The tubular column is supported with anchoring devices to achieve very great discharge heights.

Variants AR, FG and FGR are supported mechanically. Variant RK is secured in the concrete with anchoring bolts. Instead of anchorings, the cross frame element can, on request, be designed to accept ballast blocks. Other fixing methods such as fixing into a prescribed slipform platform can also be provided. If required, the distribution arms can be fitted with a counter jib to reduce operating moments. This has to be ballasted on site. The support carriers (variant AR) are telescoped horizontally to increase the support width.

The boom comprises a two-part, manually swivelled steel construction with horizontal swivel joint, carried on a continuously rotatable ball slewing rim. In the medium reach ranges, the basic arm can be driven by an electric motor if required. For the large reach ranges, arms A and B are driven electrically.

The versions with chassis (FG) operate on pneumatic tyres, two of which are steerable. All circular distributors are supplied with ready fitted concrete delivery pipelines. Special designs to satisfy individual requirements can be supplied on request.